

2025 IMPACT

2,232

people served across all programs

30%

households with minors

1 in 3

people has a disabling condition

HIGHLIGHTS

Prevent housing crisis



\$251,000

was provided to keep people in their homes.



244

households received one-time funding, and were able to remain in their homes without returning for more support OR were diverted from homelessness with one-time interventions.

Respond to those experiencing homelessness



608

people received temporary shelter through our Emergency Shelter, Interim Housing, Medical Respite, and Transitional Housing Programs.



63,459

meals were provided to guests in our shelter programs.



158

unhoused people moved into housing.

Stabilize with housing



986

people were served across all housing programs.



419

units of supportive housing throughout west suburban Cook County.



86%

of people remained in their homes after one year.

NEEDS

Housing Forward received more than **600** calls from households seeking financial assistance to avoid eviction or utility shut off. **33.7%** of households in west suburban Cook County are considered cost-burdened*, and are likely one paycheck or crisis away from experiencing housing insecurity.

30% of Housing Forward households had a source of income but were still experiencing homelessness. Illinois rents have steadily increased over the last decade, while wages haven't kept pace. For many families, even a modest apartment now exceeds what they can afford.**

As of December 2025, **142** Housing Forward households had been assessed and approved for housing, but there was no housing available to them. Illinois faces a shortage of about **10,972** supportive housing units.***

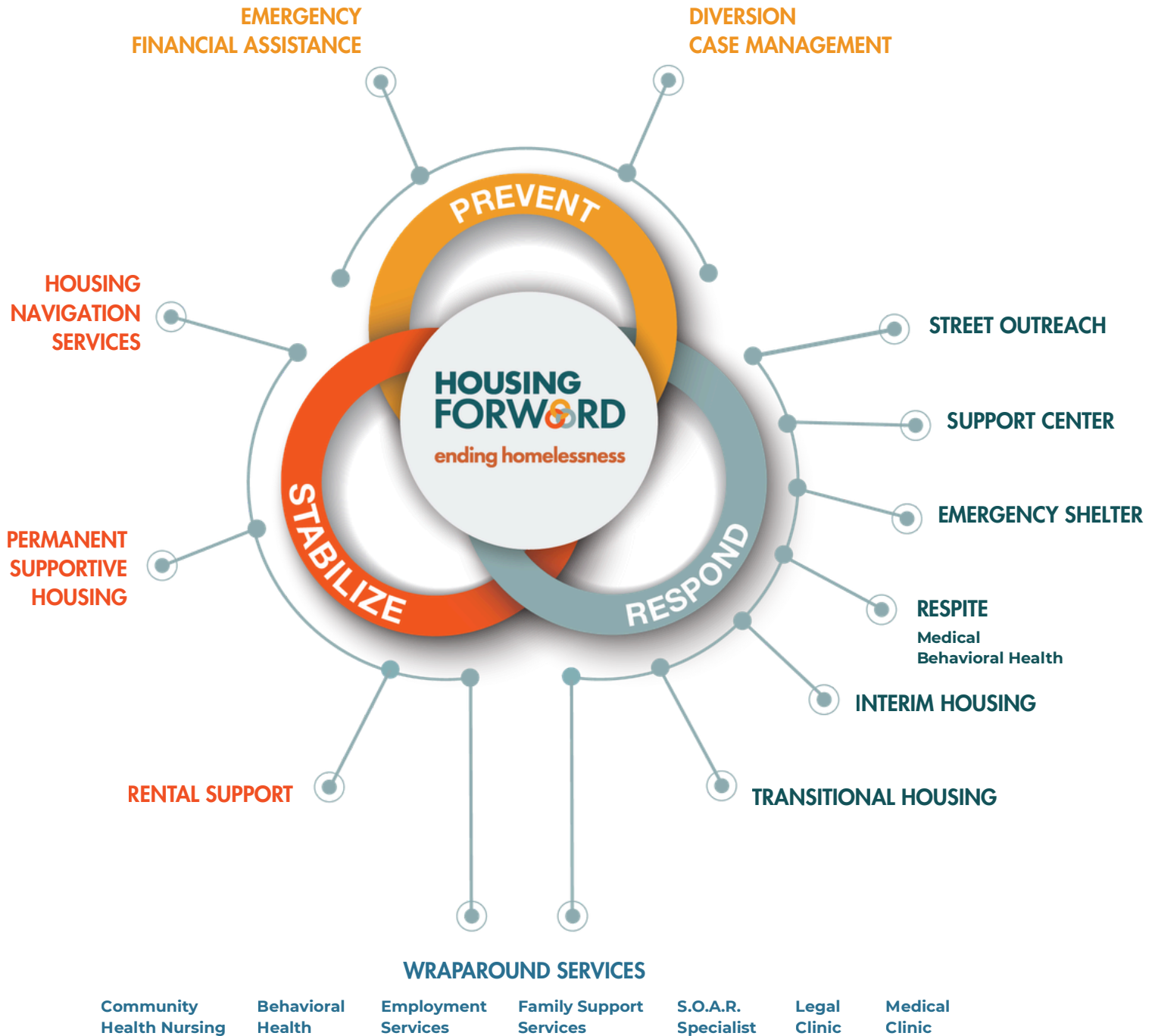
*According to DePaul University's Institute for Housing Studies. A household is considered to be cost-burdened when more than 30 percent of its income is spent on mortgage, rent, or other housing needs.

**According to the Illinois Department of Human Services

***According to Housing Action Illinois

ENDING HOMELESSNESS

Means addressing it at all levels, from the possibility of housing crisis to its permanent resolution. Here is our approach.



**SCAN TO
DONATE**

**BE PART OF
THE SOLUTION.**

**SCAN TO
VOLUNTEER**

